

Android Dumpsys Analysis to Indicate Driver Distraction

Lukas Bortnik¹, Arturs Lavrenovs¹

¹ NATO Cooperative Cyber Defence Centre of Excellence,
Filtri Tee 12, 10132 Tallinn, Estonia
{lukas.bortnik, arturs.lavrenovs}@ccdcoe.org

Abstract. Police officers investigating car accidents have to consider the driver's interaction with a mobile device as a possible cause. The most common activities such as calling or texting can be identified directly via the user interface or from the traffic metadata acquired from the Internet Service Provider (ISP). However, 'offline activities', such as a simple home button touch to wake up the screen, are invisible to the ISP and leave no trace at the user interface. A possible way to detect this type of activity could be analysis of system level data. However, security countermeasures may limit the scope of the acquired artefacts.

This paper introduces a non-intrusive analysis method which will extend the range of known techniques to determine a possible cause of driver distraction. All Android *dumpsys* services are examined to identify the scope of evidence providers which can assist investigators in identifying the driver's intentional interaction with the smartphone. The study demonstrates that it is possible to identify a driver's activities without access to their personal content. The paper proposes a minimum set of requirements to construct a timeline of events which can clarify the accident circumstances. The analysis includes online activities such as interaction with social media, calling, texting, and offline activities such as user authentication, browsing the media, taking pictures, etc. The applicability of the method are demonstrated in a synthetic case study.

Keywords: digital evidence, mobile forensics, car accident, driver's distraction, Android *dumpsys*

1 Introduction

The scope of digital evidence is growing in parallel with minor improvements and newly added functionalities in mobile devices. In general, newly introduced operating system (OS) upgrades are targeted to improve the security and ergonomics of the mobile devices. While security upgrades challenge the investigator's ability to acquire detailed digital evidence, the opposite is the case when enhancing the usability of the system: an improved user environment requires integrating new hardware and software components, which results in new streams of evidence ready to be investigated by forensic practitioners.

In comparison to traditional host-based digital forensic techniques, mobile forensic solutions must consider a range of different mobile-device specific requirements. Firstly, mobile device data is highly volatile. Some evidence will simply not survive

until the police arrive at the accident. Some can be intentionally or unintentionally and irreversibly destroyed by the user. Secondly, evidence acquisition is another challenge. Taking into consideration the usual methods of accident investigation, it is unclear how, if at all, the data from the mobile devices can be acquired. Depending on the brand, model, operating system, version and patch level, the scope to successfully acquire data varies significantly. The data available through the user interface (UI) might reveal the most common activities such as telephony or texting, but offline activities such as waking the screen would remain undetected. Even though data from lower architecture layers may deliver further clarity, current mobile phone forensic analysis solutions are simply not designed to reflect specific accident-related cases. For instance, login activities or an attempt to reply to an incoming message can easily lead to driver distraction, but whether this type of activity can be detected by current state-of-the-art solutions is questionable.

Android Operating System (AOS) devices are equipped with an interactive interface to observe user and system activities. Users and developers can inspect application and system behaviour through built-in functionalities such as a circular buffer log (*logcat*), the *dumpsys* tool or *bugreports*. These functionalities allow access to the portion of the data which is normally not visible from the standard UI. Although the ability to ‘abuse’ mobile phone diagnostic data for forensic purposes has been known for almost a decade, analysis of Android *dumpsys* diagnostic data seems to have been overlooked. In comparison to traditional smartphone digital forensic techniques, which are primarily focused on content analysis, the analysis of diagnostic data has received only limited research attention [1] [2]. A significant gap has been identified in terms of acquisition, analysis and the interpretation of the artefacts of android *dumpsys* analytical data.

Hence, the primary motivation for this study is to inspect the current state of Android *dumpsys* diagnostic data, identify artefacts which reflect specific driver activities, inspect their relevance and volatility, and demonstrate the applicability of the proposed method in a real-life investigation.

Besides the ability to avoid analysis of the user’s personal data, the study explains how to extend the scope of prospective evidence providers and how to identify drivers’ activities without the need to collect the data from ISPs. The study also demonstrates the possibility of determining those driver activities which are outside the analysis capabilities of currently available digital forensic solutions. The outcome of the study extends the perception of prospective digital forensic evidence, clarifying the circumstances leading to car accidents; and allow investigators to conduct more time- and cost-effective investigation.

The remainder of this paper is structured as follows: Section 2 reviews related work. Section 3 overviews the methodology and limitations of current work. Section 4 focuses on core Android *dumpsys* services, which are the most relevant to determine driver activities. Section 5 demonstrates the effectiveness of the proposed approach in a synthetic case study. The conclusions and future work are discussed in Sections 6 and 7.

2 Related Work

The detection of driver distraction has received substantial attention in academia over the last decade. A significant portion of research has focused on how to detect driver distraction based on sensorial data, collected either from a smartphone or vehicle systems. The majority of the solutions propose to collect the data via custom applications or additional hardware installed in the vehicle. Mantouka et al. [3] attempted to identify driving styles (including distracted driving) based on data from gyroscope, accelerometer and GPS records. In addition to the previous, Papadimitriou et al. [4] added data from a magnetometer. The data collected is temporarily stored within the device itself and eventually uploaded to the cloud-based back-end and analysed. Concerning privacy, Mansor et al. [5] proposed a mechanism for secure vehicular data storage and cloud synchronization using a custom protocol, which complies with forensically sound evidence collection requirements.

Another perspective leverages a vehicle's built-in system. Khandakar et al. [6] demonstrated a portable solution to collect vehicular data from a 3-DOF accelerometer and ECU over the OBD-II port. This data is then sent to a mobile device for further analyses and to conduct autonomous decisions such as reducing speed. Khan et al. [7] presented the effect of smartphone activities on driving performance recorded in a vehicular lifelog, which could help to detect distracted driving.

A substantial amount of research has been dedicated to solutions that can differentiate between use of a phone by a driver or a passenger. Park et al. [8] studied typical driver activities, e.g. opening vehicle doors; Torres et al. [9] focused on reading text messages; Yang et al. [10] proposed advantages that could be gained from using a vehicle's speakers; Hald et al. [11], Liu et al. [12] and Manini and Sabatini [13] made strides in terms of differentiating between driver and passenger activities based on sensorial data from wearables. Lu et al. [14] analysed sensorial data to detect current driving activity and vehicle type (car, motorbike, bicycle or travelling on foot). These, and other detection techniques, were implemented in mobile applications which should discourage drivers from dangerous interactions with mobile phones [15].

Mobile phone diagnostic data has been used relatively little in research into driver distraction. Horsman and Conniss [1] analysed two major mobile operating systems, showing the most promising sources of digital evidence that could help investigators to indicate driver distraction. The study focused on artefacts that can reveal human interaction with a mobile device acquired from two primary internal evidence providers: Android's circular buffer log and iPhone's *CurrentPowerlog.powerlogsystem* file. The study provides several options how to identify the most probable activities such as interacting with social media, texting and calling, either directly from the mobile device or using hands-free equipment. Researchers described possible challenges to acquiring and analysing the *logcat* dump. Apart from the now obsolete operating system versions (AOS 4.3 (JellyBean) and 4.4 (KitKat)), the main drawback of the proposed solution was the extremely high volatility of the evidence. If the first responders did not react within a few minutes of the accident, the content of the buffer log might be overwritten and the evidence permanently lost. Similarly, the vast majority of the circular buffer

log content would become unavailable after the device was rebooted. In addition, authors did not consider the *dumpsys* diagnostic data, which may indicate human interaction the best.

The *dumpsys* output data is not completely unknown to researchers either. However, recent research has been oriented mostly towards malware detection and malware classification techniques. Ferrante et al. [16] proposed a malware detection method, which, among other aspects, processes CPU and memory usage data acquired via *dumpsys* to identify which sub-parts of the executed application are malicious. Memory consumption data, application permissions, battery usage and network statistics collected via *dumpsys* were proposed by Lashkari et al. [17] as an additional type of feature to develop more comprehensive Android malware detection framework. Trivedi et al. [18] found that *dumpsys package* data helps with the correct application of a UID to application name resolution in a technique that identifies applications accessing malicious URLs.

Despite the fact that *dumpsys* offers powerful analytical options, it has not been utilised as a feature by many known malware datasets [19]. *Dumpsys* diagnostic data has also been found to be useful in other areas. Shoaib et al. [20] used *dumpsys* data to analyse how the recognition of human activity impacts resource consumption in smart devices. *Dumpsys* CPU statistics were included into the examination datasets to identify UI performance regressions in Android applications [21] and to identify the impact of logger-augmented mobile banking application on power consumption [22]. However, these implementations have only limited forensic value in terms of indicating driver distraction.

3 Analysis Background and Methodology

3.1 Introduction to Android *Dumpsys*

The primary purpose of the *dumpsys* tool is to allow developers to inspect diagnostic data generated by system services¹ such as process statistics, CPU consumption, network usage and battery behaviour. As with any other operating system, much of the analytical data generated by system services, installed applications or telemetry functions is not designed for digital forensic purposes. The same applies for Android devices and their system services. The primary drawback is that only a limited number of subject-relevant system events are time-stamped. Moreover, system services do not necessarily generate diagnostic events with a unified timestamp format. The time value might be expressed in epoch time, it may follow system time, or it may be expressed as a differential value, e.g. the number of seconds since the application was pushed to the *back-stack* until the *dumpsys* tool was executed. The time resolution of each set of events may also vary from milliseconds to minutes. Even if some diagnostic data does survive a system reboot, particular content was shown to be eventually overwritten, either due to user interaction or just after regular system runtime. The lifetime of the events kept

¹ Authors in [23] use the term ‘service’ as a *dumpsys* option to specify the output from particular *dumpsys* plugins.

by particular system services may also vary from seconds to months, regardless of whether or not the device is rebooted.

One of the main advantages of *dumpsys* data acquisition is that the command can operate under user level privileges. Meaning, the acquisition process does not require elevation to the root-level access, but rather the standard ADB shell. If the minimal set of requirements² is met, full diagnostic output can be acquired by the ADB *shell dumpsys* command without setting any additional arguments. Diagnostic information will be extracted from all supported services. The scope of the supported system services and the format of diagnostic data differ based on the installed platform. For instance, the primary tested model *Samsung Galaxy S9, SM-G960F/DSA* running on Android 8.0 supports 225 different services, while *Samsung Galaxy S3 (AOS 7.0)* supports 189 services and *Samsung Galaxy S5 (AOS 5.0)* altogether 196 services. Dumping all services may, however, produce quite verbose output in which not all events are valuable for forensic purposes.

3.2 Evidence Identification

The diagnostic data from a single service may contain either data from a related service or the aggregated data from multiple services. Since the output is highly verbose, the initial objective is to limit the scope of targeted services and exclude irrelevant diagnostic content. As the *dumpsys* services do not generate diagnostic data in a unified structure, the examination requires separate per-service data acquisition. Each *dumpsys* service is triggered and the output is manually examined. Since the intention is to construct a timeline dataset, the first filtering criterion requires the presence of time information. Should the service generate information (an event) without a timestamp, the service (the artefact) is excluded from further observation (see Fig. 1).

The next criterion inspects subject-relevant content which would reflect the driver's intentional interaction. The diagnostic data is categorised based on relevance to the investigation subject. As case-relevant data is essentially an event which reflects direct or indirect driver interaction; for instance, waking up the screen, unlocking the device, charging, changing settings, opening an application and switching between applications. Irrelevant content can be considered the portion of the diagnostic data which is not generated as a response to the driver's intentional interaction or that does not correspond to driver activity; for instance, an event which reports the volume of currently consumed memory or CPU is irrelevant.

² Steps to enable the ADB shell varies depending on the installed AOS [41].

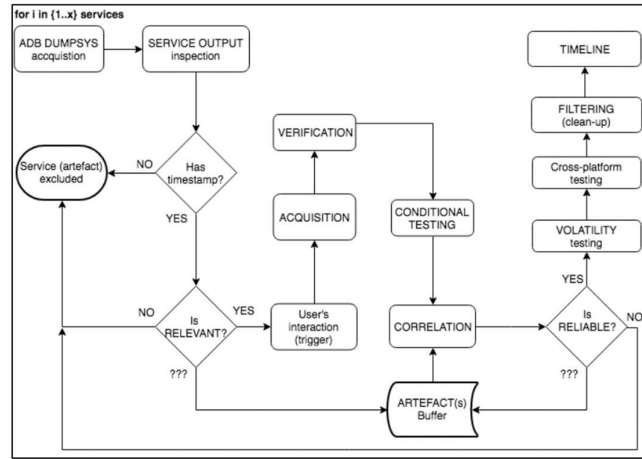


Fig. 1. Analyses process

Lastly, events which are not certainly irrelevant nor definitely attributed to the driver's intentional activity are examined and correlated in the context of all other events; for example, a diagnostic output from *WiFiController* could be irrelevant, but it tracks and logs activities such as screen on/off or user login, and so might be relevant.

The next stage requires empirical examination to identify under what conditions each individual event is or is not generated. To exclude a portion of uncertainty, the observation also considers whether the event can be generated without any user interaction. The scope of the tests is customised for each artefact being explored. For instance, telephony activities are examined separately for a phone call which is conducted through the built-in earpiece, through the Bluetooth-connected car speaker or through a wired external handset. The behaviour is then observed for situations when the phone call is accepted, rejected or ignored. The full set of the conducted tests is outside the scope of this paper.

The output of this stage results in a set of triggers which can be responsible for generating each individual event. Following the principle of evidence reliability, each event is repeatedly invoked by the set of discovered triggers. Should the event be generated after a defined set of triggers is executed, the event is considered to be reliable. Any deviation from the expected output marks the event as unreliable and the event is excluded from the final timeline dataset.

Another examination criterion is the volatility of the event. The primary volatility test shows whether the event survives system reboot. If it does, the next stage is to determine the condition under which the event persists. The events might be erased after a particular buffer has been reached or if the user triggers a certain activity (e.g. the application is closed). The buffer might be defined by the maximum size of the log, by the number of events being stored within one log, or by the expiration time.

A preliminary examination returned a list of services in which the diagnostic data can be sufficient to indicate the driver's interaction with the mobile device. The list

consists of 8 out of 225 supported services: *activity*, *bluetooth_manager*, *mount*, *statusbar*, *telecom*, *customfrequencymanagerservice*, *wifi*, and *usagestat*. A brief summary from the examination of each individual service is described in section 4.

3.3 Post-acquisition Stage

The post-acquisition stage filters unnecessary content and unifies the event structure to build the timeline. First, the timestamp format across all accepted events is converted to the unified format. However, if multiple same-source events are generated within the same minute (which often is the case), all of them will have the same timestamp. Consequently, the analyst may unintentionally break the relationship between individual events which might result in misinterpretation of the user's activities. To maintain the integrity of the timeline, the order of the generated events has to be preserved. For the purpose of this analysis, events which are not timestamped with at least one-second resolution were tagged by an *ORDER* number which maintains the order of events in which they initially were generated.

All extracted events are delimited into three fields: *DATE*; *TIME* and *MESSAGE* body. To enhance the usability and simplify further filtering, each individual event is enriched with additional fields: *SOURCE*, *CLASS*, *EVENT_TYPE* and *DESCRIPTION*. The *SOURCE* tag equates to the origin; that is to say, the name of the service which generates the event, e.g. *wifi* or *telecom*. The *CLASS* defines the specific application's class. For instance, the *wifi* service generates diagnostic output from but not limited to the following classes: *WifiStateMachine*, *AutoWifiController*, *WifiController* and *WifiConnectivityMonitor*. *EVENT_TYPE* and *DESCRIPTION* tags were constructed based on observation, researched theory and the contextual meaning. *EVENT_TYPE* refers to the group of same type events, regardless of which service or class generates a particular event. A good example is a login activity event type which refers to the user's login and logout events. The login activity event type aggregates the events from *wifi*, *mount* and *statusbar* services (see Table 1).

Table 1. Event types produced from individual *dumpsys* services

EVENT_TYPE	SOURCE (dumpsys service)
app activity	usagstats, CustomFrequencyManagerService
BT activity	bluetooth_manager, CustomFrequencyManagerService
call activity	telecom, statusbar, CustomFrequencyManagerService
charging activity	CustomFrequencyManagerService
login activity	wifi, mount, statusbar
screen activity	wifi, CustomFrequencyManagerService
task activity	activity,
wifi activity	CustomFrequencyManagerService

The 'DESCRIPTION' field clarifies the meaning of the message body and the activity type with greater granularity. For instance, the screen activity distinguishes *screen on* and *screen off* events, and the call activity recognises *call started/ended*. Events for which their meaning is unclear were tagged as unknown (-) (see Table 2).

Table 2. Event type descriptions

EVENT TYPE	DESCRIPTION
app activity	app launched; app moved to background; app moved to foreground; lastTime executed; (-)
BT activity	BT AUDIO connected; BT device connected; BT device disconnected; BT entered AUDIO; BT entered NORMAL; BT paired device; call answered; audio route; (-)
call activity	call ended; call started; (-)
charging activity	charging OFF, charging ON
login activity	UI locked; UI unlocked; login detected; pwtype requested; pwtype confirmed; unlock requested; unlock confirmed;
screen activity	screen OFF; screen ON
task activity	app exited
wifi activity	WiFi OFF; WiFi ON

Consequently, each case-relevant event extracted from *dumpsys* diagnostic output appears in the timeline in a unified structure (see Fig. 2).

```

DATE:      04/27/19;
TIME:      13:17:11.253
ORDER:     (-);
SOURCE:    wifi;
CLASS:     WiFiConnectivityMonitor;
EVENT_TYPE: screen activity;
DESCRIPTION: screen OFF;
MESSAGE:   processed=DefaultState org=NotConnectedState
           dest=<null> what=135177(0x21009) (75938.065)
           EVENT_SCREEN_OFF 0 0

```

Fig. 2. An example of event with unified structure

3.4 Limitations

The primary limitation is the rapid development of the Android operating system and the application packages, which might invalidate certain results over the period of analysis. Significant changes have already been introduced in AOS 9 and 10. A considerable limitation is the scope of explored devices and installed operating systems. The research results might be limited to device-specific hardware and installed versions of the OS. Lastly, neither official resources [23] [24] nor Android project source code [25] revealed sufficient documentation to support the research results. The research outcomes are therefore highly depended on empirical examination supported by limited documentation.

4 Core Dumpsys Services to Indicate Driver Distraction

4.1 Application Activities

Activity manager is the Android built-in class available from API level 1 which interacts and provides the diagnostic data about running processes, services and their activities. The *Activity* command supports extended operation switches to limit the observation to a specific package, service or broadcast delivery.

For the purpose of this research, the analysis of the *Activity manager* output was limited to the *Recent Tasks* section. The data in the *Recent Tasks* dump provides granular information about tasks that the user has most recently started or visited [26]. Authors in [27] define a task as '*a collection of activities that users interact with when performing a certain job*'. All activities are arranged into a stack. If the user opens a new activity within the application, older activities are sent to the *back-stack*. Once the user exits the activity, the activity from the top of the *back-stack* will be retained with the configuration it contained before being sent to the *back-stack*. Task configuration holds details such as finger touch position, scroll position or even bar colours. Each record in the stack holds the time when the task had been last active (*lastActiveTime*).³

Tasks are accompanied by *Intent* [28] [29]. By default, *Intent*'s structure consists of primary attributes as *Action* and *Data*. *Action* and *Data* are paired to define a specific action, e.g. '*ACTION_VIEW content://contacts /people/1*'. The secondary attributes such as *category*, *component* and *type* define expected action more specifically. For instance, the *category.Launcher (cat)* orders the application to start on top of all currently running applications. *Component (cmp)* defines an explicit name of the component to be executed, e.g. to start user login interface in *Revolut app* would be defined as *com.revolut.revolut/com.revolut.ui.login.pin.LoginActivity*. Further explanation of these attributes is beyond the scope of this paper.

Once the task is resumed, the combination of individual definitions (*act*, *cat*, *cmp*) and others orders the system to resume the exact configuration as the application had before it was pushed to the background. Meaning, retained tasks give the investigator the ability to recover identical situations which the user had faced in the past.

The activities within the *Recent Task* dump are listed from the most recent at the top of the list. The number of tasks running in the background relies on hardware configuration. If the user runs many background tasks at the same time, the system might start destroying them in order to recover memory. Even though the *Recent tasks* memory is reboot-resilient, the evidence can be irreversibly destroyed if the user (or the investigator) closes all running applications. The *back-stack* will be freed without the ability to recover any past activities. While examining the test device, it was possible to recover 32 tasks from last 22 hours of user activities.

³ The *Recent task* dump also allows to attribute past activities to a specific user (*EffectiveUiId*).

4.2 Application Usage Statistics

Application use statistics can be acquired from *dumppsys UsageStats* service, available for developers from API level 21. The statistics are collected for a package for a specific time range [30]. Data is stored separately for packages which are in the foreground or background of UI, or for packages which are idle for a specific time interval. The output can be divided into the following three categories:

1. *In-memory* statistics;
2. *Event type collector* statistics; and
3. *Package idle* statistics.

The *In-memory* statistics (stats) are aggregated into certain periods – day, week, month and year. However, regardless of the length of the aggregation period, the aggregated output of *in-memory* stats does not have to contain statistics through the whole aggregation interval. In fact, the data is collected within a system-defined time range (*timeRange*). For instance, *In-memory daily* stats may be limited to application use statistics over the last several hours, ‘*weekly stats*’ to last several days, etc. While the start time of *timeRange* is system-defined, the end time equals the time of *dumppsys* acquisition.

Each aggregation period contains usage statistics for each individual package which was executed on the system over the defined *timeRange*. The *totalTime* is measured over the same period of time. The investigator may conclude that during the time interval (*timeRange*), the user had been using a particular application (*package*) for a specific amount of time (*totalTime*). The *lastTime* refers to the time of the last user interaction (see Fig. 3).

```

user=0
  In-memory daily stats
    timeRange="4/26/2019, 20:36 – 4/27/2019, 14:07"
    packages
      package=com.whatsapp totalTime="00:30" lastTime="4/26/2019, 20:59"
      package=com.waze totalTime="04:59" lastTime="4/27/2019, 13:23"
    <<output omitted>>

```

Fig. 3. Usagestats – An example of *In-memory daily stats* output

Furthermore, each time the application is called, the *Event type collector* denotes that the activity moved to the foreground or to the background and the time, application name and associated activity type are recorded. If the user pushes the application to the background, *UsageEvents.Event* object will generate a *MOVE_TO_BACKGROUND* event. If the user calls the application to the foreground, the *UsageEvents.Event* object

will generate *MOVE_TO_FOREGROUND* event.⁴ If the application consists of multiple activities, a separate event will be generated for each individual activity [31] (see Fig. 4).

```

<<output omitted>>
time="4/27/2019, 22:58"    type=MOVE_TO_BACKGROUND package=com.google.android.gm
                           class=com.google.android.gm.ui.MailActivityGmail
time="4/27/2019, 22:59"    type=MOVE_TO_FOREGROUND package=com.google.android.gm
                           class=com.google.android.gm.ComposeActivityGmail
<<output omitted>>

```

Fig. 4. Usagstats – An example of *Event type collector* statistics

UsageEvents.Event object also reports the *class* which refers to a specific activity within the application. For instance, if a driver attempts to compose a new email, a new set of events with updated class definition will be generated (+*ComposeActivityGmail*) (see Fig. 4).

Although *In-memory* statistics and *Event type collector* events are logged only with a 1-minute resolution⁵, the investigator may still define the last execution time more precisely. An additional indication about the driver’s interaction with the mobile device can be derived from *Package idle stats* which count the time since the application was last used. In comparison to the previous *Usagstats* categories, *Package idle stats* do not keep the history of the application usage, but only the most recent record per application. If the application or its internal activity is either executed or pushed to the background or to the foreground of the UI, the *lastUsedElapsed* counter will be restarted. While the *lastUsedElapsed* counter counts the time since the application was last used, the *lastUsedScreenOn* counter counts the time during which the screen is on (see Fig. 5).

```

<<output omitted>>
package=com.facebook.orca lastUsedElapsed=+1h10m45s946ms lastUsedScreenOn=+7m0s774ms idle=n
package=com.whatsapp lastUsedElapsed=+4m2s943ms lastUsedScreenOn=+1m0s491ms idle=n
<<output omitted>>

```

Fig. 5. Usagstats – An example of *Package idle* statistics

4.3 WiFi Analytics and Screen Activities

ADB *dumpsys* offers several options to inspect WiFi behaviour, connectivity, configuration and statistics. The tested device supported five *dumpsys* services: *wifi*, *wifi2p*,

⁴ As of API level Q (29), the ‘MOVE_TO_’ event types were deprecated and replaced by constants `ACTIVITY_PAUSED` and `ACTIVITY_RESUMED` [31].

⁵ As of API level 28, events are generated with 1 second resolution.

wifi_policy, *wificond* and *wifiscanner*. Due to extensive output, further explanation will be limited to *wifi* service, which may best clarify the driver's activities.

Firstly, one may wonder why there is a need to inspect WiFi behaviour if the driver is most likely not connected to any WiFi network while driving the car. It is because selected classes keep tracking system activities and therefore the driver's behaviour.⁶ For instance, any time a driver switches the screen on or off, the screen state change is reported. Screen state changes can be observed through multiple classes, primarily: *WifiController*, *WifiStateMachine*, *WifiConnectivityMonitor* and *AutoWifiController*. The change of screen state can be recognised in the body of the message instantly (as 'screen on' or 'EVENT_SCREEN_ON') or it may require further decoding, as is the case for the *WifiController* class.

Individual classes report system changes the *WiFiManager*, which acts as a primary API for managing all aspects of WiFi connectivity [32]. Reported events contain so-called *msg.what codes* which serve primary API to identify the type of received message. Messages are constructed as a sum of the *Message.what* BASE message address and the class's specific state address. *Message.what* BASE message address is declared as a public static final integer [33], e.g. *WifiController*'s BASE message address is 0x00026000 (155648). The class's specific state addresses are defined in each individual class's source code. For instance, *WifiController* declares the *screen on* state as BASE+2 and *screen off* as BASE+3 [34] thus reporting the change of the screen state as *msg.what=155650* for *screen on* and 155651 for *screen off* (see Fig. 6). The same principle is applied for all supported classes which use '*msg.what*' codes.

```
<<output omitted>>
rec[2]: time=04-27 13:23:11.811 processed=DefaultState org=DeviceActiveState dest=<null>
      what=155651(0x26003)
rec[3]: time=04-27 13:23:15.650 processed=DefaultState org=DeviceActiveState dest=<null>
      what=155650(0x26002)
<<output omitted>>
```

Fig. 6. Wifi - *WifiController* screen activity

The primary drawback, however, is that the vast majority of *dumpsys wifi* service diagnostic content does not survive system reboot. The lifespan of each individual class also varies. While testing, the *WifiController* and *WifiStateMachine* classes held diagnostic data from the last 2 hours, *AutoWifiController* for approximately 10 hours, and *WifiConnectivityMonitor* and *WifiConnectivityManager* for up to 36 hours.

4.4 Login Activities

The user's login activities can be perceived as the artefact which would indicate the driver's activity the best, but retrieving it is a considerable challenge. Android *dumpsys*

⁶ The statement does not apply if the device is set to airplane mode.

output holds only fragmented and, in most cases, indirect evidence of user login activities, if anything. While logout activity can be indirectly attributed to *screen off* events, this is not necessarily true of login activity. Given that the screen may be woken up without any user interaction, *screen on* events by themselves are insufficient to indicate that the driver logged in. Nevertheless, the investigation revealed several options for how to detect login activities indirectly.

A driver's login activity can be determined from *WiFiManager* statistics, the *WifiController* class specifically. Applying the decoding approach described in the previous section, the investigator may identify login activities tagged as *what=155660(0x2600c)* messages. The value is constructed as a sum of *WifiController*'s base message address '0x00026000 (155648)' and *USER_PRESENT* state address (12). Regardless of whether the WiFi module is enabled or not, and regardless of what authentication method is used, *WifiController* reliably reported all user logins (see Fig. 7).

```
<<output omitted>>
rec[173]: time=05-04 20:42:27.884 processed=DefaultState org=StaDisabledWithScanState
         dest=<null> what=155660(0x2600c)
rec[176]: time=05-04 20:43:46.186 processed=DefaultState org=StaDisabledWithScanState
         dest=<null> what=155651(0x26003)
<<output omitted>>
```

Fig. 7. Wifi - User's login activity

Another indirect source of the prospective login artefacts is the Android disk encryption subroutine. Each time the user changes or provides credentials to unlock the UI, the *cryptfs connector* is initiated which is accordingly reflected in system events. *Cryptfs connector* activities (if FDE is present) can be obtained from *dumpsys mount* service. The main benefit is that behaviour is reliable and the log may trace login events over several hours. The tested device held logins from the last 7 hours. However, if the user uses fingerprint or face recognition, the log is not generated. Lastly, *cryptfs* events are not reboot resilient.

A partial solution to this problem can be retrieved from *statusbar manager* service logs. Android processes can call a routine in another process using a binder to identify the method to invoke and pass the arguments between processes [35] [36] [37]. The same mechanism is used to maintain binder tokens which are shared between *Notification* and *StatusBar* managers. Depending on the installed version of the OS, Android processes may communicate with others via native binder object – the *IBinder* – or via proxy – the *BinderProxy.java* [38].

Token activities can be acquired by the *adb shell dumpsys statusbar* command. Among other triggers, each time the user logs into the device, *statusbar manager* generates the *what=CLEAR* event. If the user or the system itself locks the user interface out, a secondary event *what=HOME RECENT* is generated. The events are ordered by time, with the most recent at the bottom of the list. The list holds up to 100 events. The primary drawback of this artefact is that the associated timestamps do not hold the date,

just the time with millisecond resolution. The second downside is that the artefact is not reboot resilient. Regardless of what security measure is applied (PIN, pattern, fingerprint or face recognition), the events are reliably recorded.

4.5 Telephony Activities

Android *dumpsys telecom* service generates a list of recently conducted phone calls. Each call log contains call direction, the *startTime* and the *endTime* of the phone call. For each direction, the *callTerminationReason* is defined by *DisconnectCause* attributes, the *Code* and the *Reason*. These attributes show whether the phone call was missed, rejected, or ended by a caller or by the counterpart. Depending on used technology, *telecom* shows individual audio states. ‘Each state is a combination of one of the four audio routes (earpiece, wired headset, Bluetooth, and speakerphone) and audio focus status (active or quiescent)’ [39]. Whenever the driver conducts a phone call via the external handsfree kit and switches back to the earpiece or phone speaker, the *telecom audio_route* is switched and logged (see Fig. 8).

```

<<output omitted>>
20:27:12.723 - SET_RINGING (successful incoming call) :{...
20:27:12.924 - START_RINGER:{ ...
20:27:12.926 - SKIP_VIBRATION (hasVibrator=true, ...
20:27:13.003 - AUDIO_ROUTE (Leaving state QuiescentBluetoothRoute) :{...
20:27:13.003 - AUDIO_ROUTE (Entering state RingingBluetoothRoute) :{...
20:27:16.623 - UNMUTE: BPSI.aC->CARSM.pM_MUTE_OFF@m8I
20:27:16.649 - STOP_RINGER: BPSI.aC@m8I
20:27:16.674 - REQUEST_ACCEPT: BPSI.aC@m8I
20:27:16.958 - AUDIO_ROUTE (Leaving state RingingBluetoothRoute): ...
20:27:16.959 - AUDIO_ROUTE (Entering state ActiveBluetoothRoute): ...
20:27:16.993 - SET_ACTIVE (active set explicitly):CSW.sA@m8Q
20:27:17.048 - CAPABILITY_CHANGE ...
20:27:32.378 - SET_DISCONNECTED (disconnected set explicitly> DisconnectCause
20:27:32.509 - DESTROYED:CSW.rC@m+E
<<output omitted>>

```

Fig. 8. Telecom - Switching audio routes

Yet another benefit is that *telecom* service preserves the phone log entries even if the user deletes the log from her user interface. The downside it that *telecom* log is not reboot resilient.

4.6 Bluetooth

Bluetooth manager has been available in Android source code since API 18. The most valuable artefacts reside in the base64-encoded *BTSnoop* file format log summary. *BTSnoop* log resembles the snoop format of *Host Controller Interface* (HCI) packets⁷ [40]. Depending on the installed platform, *BTSnoop* log summary may contain an extended clear text log. If a driver conducts a phone call via a Bluetooth paired device,

⁷ <https://tools.ietf.org/html/rfc1761>

either incoming or outgoing, a unique event *HFSM-enter AUDIO* is generated. The event itself does not signal an answered call, but rather entering the ringing state. With incoming calls, if the call is answered, the service will generate '*HFSM-processAnswerCall*' event. If the call is outgoing, the BT manager generates the *HFSM-processDialCall* record. When the call is finished, the mobile device quits the *AUDIO* states which is signalled by *HFSM-enter Connected message* (see Fig. 9).

```

<<output omitted>>
05-04 20:27:12.808--HFSM-setAudioParams(prev) - 0,1
05-04 20:27:12.811--btif_hf.cc -- connect_audio([0] e0:ae:5e:f6:7c:XX)
05-04 20:27:13.003--HFSM-msg 6, but mVoiceRecognitionDevice is null
05-04 20:27:13.468--HFSM-setAudioParams - 0,1
05-04 20:27:13.471--HFAM-clear pathChangeTone (false, false)
05-04 20:27:13.507--HFSM-enter AUDIO (1/1) : F6:7
05-04 20:27:16.575--HFSM-processAnswerCall : F6:7
05-04 20:27:32.495--btm_sco.cc -- Send SCO Disc Req to 6
05-04 20:27:32.522--btm_sco.cc -- Recv SCO Disc Comp 22 on 5 from 6
05-04 20:27:32.530--HFSM-enter Connected (1/1)
<<output omitted>>

```

Fig. 9. Bluetooth manager - received phone call

If the call is conducted over cross-platform VoIP applications such as WhatsApp, the service records the events accordingly. The log integrity is not affected by system reboot, and log lifetime exceeds several months; the tested device held the log from the last 5 months.

4.7 SSRM Service (CustomFrequencyManagerService)

Android *dumpsys CustomFrequencyManagerService* (SSRM service) is the last of the documented services which may clarify the circumstances of the accident.⁸ SSRM service has been identified only on Samsung devices. Despite this, if the investigated model is a Samsung, the investigator should include the output from the SSRM service in the range of observed artefacts.

The content of the SSRM service can be acquired by *adb shell dumpsys CustomFrequencyManagerService*. The output can be divided into two main sections:

1. Application (process) statistics and *Recent Battery Level Changes*; and
2. *SSRM memory dump*.

Both sections hold battery statistics data, mainly about total operational time, the period of the time over which the device was charged, and the amount of data transferred while connected to WiFi or GSM networks. Device battery statistics are recorded separately for applications in the foreground and background when the state of the screen is on

⁸ As of API level 28, the data previously available under *CustomFrequencyManagerService* service are available under *sdhms* service. *CustomFrequencyManagerService* remains present but without any forensic value.

and off, while the phone is connected to a paired Bluetooth device, and while using different power modes.

Apart from the per-app statistics, the *Recent Battery Level Changes* section keeps an overall battery statistic which is summarised for both states separately when the screen is on and off. Each time the state of the screen changes, the *Start Time* and the *End Time* of a new state is recorded, and *Duration* of the state is calculated. Whenever the device's battery is charged, the *OnBatteryTime* value equals 0 ms. The primary drawback resides in the reliability of the artefact. In testing, the *Recent Battery Level Changes* did not contain *screen on/off* events each time as they were triggered. However, should the event be already present in the log, it can be considered as reliable information.

The content of the *SSRM memory dump* is dumped as a base64-encoded data stream delimited by *SSRM MEMORY DUMP** header and trailer. Decoded data stream resolves in a gzip-compressed data structure. The decompressed event log consists of fixed header and the SSRM service log body. Each event is tagged by a timestamp, followed by an event type tag and the log message. The decompressed SSRM service log body holds a fixed number of 8,002 events. Since the detailed description of the SSRM service log is beyond the scope of this paper, further explanation will be limited to a brief description of two of the twelve recognised event types, [SET] and [PKG]. An example of the SSRM service log limited to [SET] and [PKG] events is in Fig. 10.

```

<<output omitted>>
2019-02-08 23:08:44 [SET] [NDX0RXXXOXXOX] [LCD] OFF
2019-02-08 23:10:24 [SET] [NDX0RXXXOXXOX / BT: Volvo] [BT] CONNECTED
2019-02-08 23:10:51 [PKG] com.samsung.android.incallui
2019-02-08 23:10:51 [SET] [NDX0ORXXXOXXOX / BT: Volvo] [LCD] ON
2019-02-08 23:11:04 [PKG] com.facebook.katana
2019-02-08 23:11:10 [SET] [NDX0RXXXOXXOX / BT: Volvo] [LCD] OFF
2019-02-08 23:14:33 [PKG] com.samsung.android.incallui
2019-02-08 23:14:33 [SET] [NDX0ORXXXOXXOX / BT: Volvo] [LCD] ON
2019-02-08 23:14:34 [SET] [NDX0ORXXXOXXOX / BT: Volvo] > [Call] CallStateOffHook : true
2019-02-08 23:15:05 [SET] [NDX0RXXXOXXOX / BT: Volvo] [LCD] OFF
<<output omitted>>

```

Fig. 10. An example of SSRM service log

A [PKG] event types refer to application execution or activity. The body of the message refers to the name of the package which was executed. In comparison to the *UsageStats* artefacts, [PKG] events do not allow us to differentiate between activities within the same application. In addition, [PKG] messages may appear in the log even if the driver does not interact with the application. For instance, when a driver ignores an incoming phone call, once the ringing state is over the SSRM service will generate a [PKG] event which refers to the application on the top of the UI. Should the Facebook app be the last used application, the service will generate [PKG] *com.facebook.katana* event which can be misinterpreted as driver interaction. These and other discrepancies can be clarified.

A [SET] event type primarily reports power management changes. The SSRM service distinguishes two power-related functions, the power mode and the battery status.

Depending on the version of AOS, the investigator may recognize *Normal Mode* [N], *Power Saving Mode* [P]; *Ultra Power Saving Mode* [U] and the *Emergency Mode* [E].⁹ It also distinguishes battery status – charged or discharged. If the device is charged, the service tracks the charging methods standard *AC charging* [Ac], *USB charging* [Usb], *Wireless charging method* [W] or *Fast Charging* [F]. The information is combined in the first two bits at the beginning of the [SET] event bit string.¹⁰ While the 1st bit represents the power mode – [SET] [Nxxxxx...] – the 2nd reports battery status – [SET] [xAxxxxx...]. For instance, a device which is set to *Power Saving Mode* [P] and charged by standard charger [Ac] will generate [SET] [PAxxxxx...] events. Similarly, a device which is set to *Normal Mode* and discharged [D], generates the [NDxxxxx...] events (see an example in Fig. 11).

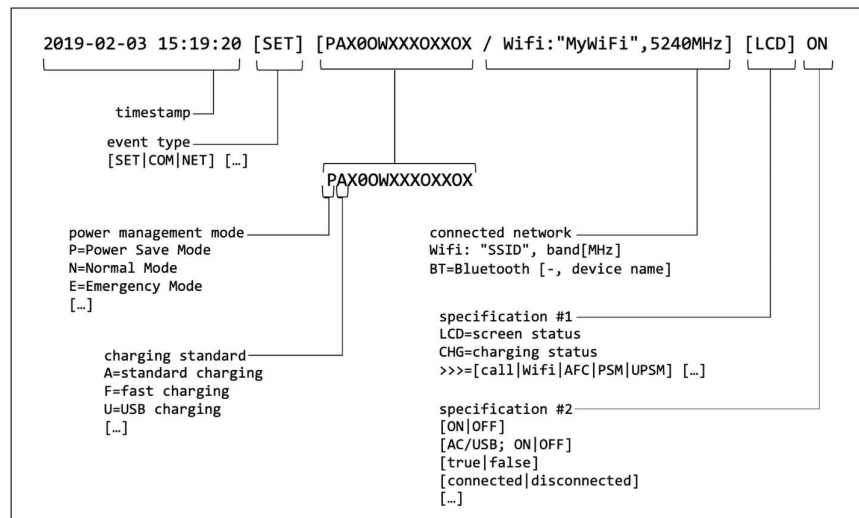


Fig. 11. SSRM [SET] - An example of decoded SET event

Each time the power mode is changed, a single or a combination of SET events is generated. Similarly, each time the device is connected or disconnected from the power source; the charging status change is logged.

A similar approach is applied for screen changes. Each time the screen is changed to on or off, the SET [LCD] ON, respectively SET [LCD] OFF event is generated. Consequently the 4th bit of the SET event bit string is switched to value 0 if the screen is on, or switched back to value X if the screen is off. The [LCD] ON/OFF events are reliably generated regardless of the trigger, be it user interaction, a received phone call or notification of a fully charged battery.

⁹ A slightly different terminology can be identified in devices running AOS 7.0+.

¹⁰ The official terminology or definitions may differ.

SSRM memory dump [SET] event content is not limited to power mode and charging status. It tracks any network-related changes such as connectivity to Bluetooth devices or WiFi networks. It tracks details such as SSIDs, Bluetooth friendly names, connection status, whether Bluetooth is enabled or if the device is also connected to an external device. A summary of decoded attributes is presented in Fig. 11.

The log lifetime depends on device activity, the primary tested device held the events from the last 5 days. Neither intentional reboot, nor several hours long power outage affected the integrity of the log.

5 Synthetic Case Study and Results

The case study demonstrated a simulated car accident which occurred after the driver's interaction with a mobile device. The test was conducted on a *Samsung Galaxy S9*, *SM-G960F/DSA*, AOS 8, connected by Bluetooth to the car's entertainment system. The evidence acquisition was limited to 8 out of 225 supported services which were described in the previous section. The timeline search was focused on a 20-minute time window when the accident was reported. All simulated activities were conducted in accordance with testing script and executed by a co-driver. The script contained the following activities:

1. mobile device connected to the car's stereo system;
2. driver uses *Chrome app* to search for a new destination and uses *Google maps app* for navigation;
3. driver receives phone call, responds via handsfree kit and switches to device's ear-piece;
4. driver is texting via Messenger; and
5. driver is taking pictures.

Since, the full analysis results exceed the scope of this paper, the applicability of this technique is demonstrated only on a limited number of examples.

5.1 Results

The analysis can be approached from multiple angles. The first option can be to focus on the driver's login and screen activities to identify whether a driver even attempted to log in. In the current case, multiple login activities were reported by *WifiController* (wifi), *BinderProxy* (statusbar) and *Crypt Connector* (mount) classes. Each login activity was followed by *Screen On* activity, which copies natural behaviour while logging into the device. Screen activities were proven reliably reported by all examined *wifi* classes (see Fig. 12).

Time	CLASS	DESCRIPTION	MESSAGE
13:45:47.285	WifiController	screen ON	processed=DefaultState org=DeviceActiveState dest=<null> what=1556500
13:45:47.286	AutoWifiControll	screen ON	processed=DefaultState org=InitialState dest=<null> what=12(0xc) CMD
13:45:50.236	BinderProxy	UI locked	pkg=com.android.systemui userId=0 what=HOME RECENT token=android.os.B
13:45:53.420	CryptConnector	unlock requested	SND -> {168 cryptfs setpw_for_ext [scrubbed]}
13:45:53.421	CryptConnector	unlock confirmed	RCV <- {200 168 0}
13:45:53.862	BinderProxy	UI unlocked	pkg=com.android.systemui userId=0 what=CLEAR token=android.os.BinderP
13:45:53.918	WifiController	login detected	processed=DeviceActiveState org=DeviceActiveState dest=<null> what=15
13:48:47.623	AutoWifiControll	screen OFF	processed=DefaultState org=InitialState dest=<null> what=12(0xc) CMD

Fig. 12. Driver's login activity

The second option is to observe *UsageStats – Event type collector* events which cannot be generated without user interaction. Within an observed timeframe, it was possible to detect all driver activity defined in a test script, including:

- home button touch, (*com.android.launcher*);
- run *Galaxy Finder* to search for an application;
- run *Waze* app and set up the navigation;
- USB connectivity (car's charger);
- switching between executed applications *Chrome* app, *Google maps*, *Messenger*, *Waze* and *Contacts*;
- browsing contacts, dialling, conducting a phone call;
- switch to PiP mode; and
- taking a camera picture.

An example of driver activities extracted from *Usage* statistics is in the figure below.

Time	ORDER	SOURCE	MESSAGE
13:29:00.000	2053	usagstats	type=MOVE_TO_FOREGROUND package=com.samsung.android.app.galax
13:29:00.000	2054	usagstats	type=MOVE_TO_BACKGROUND package=com.samsung.android.app.galax
13:29:00.000	2055	usagstats	type=MOVE_TO_FOREGROUND package=com.sec.android.app.launcher
13:30:00.000	2056	usagstats	type=MOVE_TO_BACKGROUND package=com.sec.android.app.launcher
13:30:00.000	2057	usagstats	type=MOVE_TO_FOREGROUND package=com.android.chrome class=org.
13:30:00.000	2058	usagstats	type=MOVE_TO_BACKGROUND package=com.android.chrome class=org.
13:30:00.000	2059	usagstats	type=MOVE_TO_FOREGROUND package=com.google.android.apps.maps

Fig. 13. An example of *UsageStats* diagnostic output

Even the output from *UsageStats* could be sufficient to conclude that the driver did interact with the mobile device. When the driver conducted a phone call, the mobile device was already connected to the car's entertainment system. Therefore, the ring tone was routed through the car's audio system, which was signalled by both *bluetooth_manager* (at 13:22:37.839) and *telecom* services (at 13:22:38.012) (follow Fig. 14).

Time	CLASS	DESCRIPTION	MESSAGE
13:22:36.000	phone log	call started	"CallTC@15 [Apr 277
13:22:37.839	BT logs	BT entered AUDIO	--HFSM-enter AUDIO (1/1) : F6:7
13:22:38.011	phone log	audio route	AUDIO_ROUTE (Leaving state QuiescentBluetoothRoute):E
13:22:38.012	phone log	audio route	AUDIO_ROUTE (Entering state RingingBluetoothRoute):E
13:22:39.470	AutoWifiControll	screen ON	processed=DefaultState org=InitialState dest=<null>
13:22:40.667	BT logs	Call answered	--HFSM-processAnswerCall : F6:7
13:22:40.928	phone log	audio route	📞 AUDIO_ROUTE (Leaving state RingingBluetoothRoute):E
13:22:40.928	phone log	audio route	AUDIO_ROUTE (Entering state ActiveBluetoothRoute):E
13:22:41.207	BT logs	BT AUDIO disconnected	--HFSM-enter Connected (1/1)

Fig. 14. A phone call conducted via BT handsfree device

Then the driver accepted an incoming call which was again signalled by both services, by *bluetooth_manager* at 13:22:40.667 and by *telecom* at 13:22:40.928. At 13:22:41.207 *bluetooth_manager* reported the change of state to *HFSM-enter Connected (1/1)* which signals a return to the 'normal' state without interactive connection to the Bluetooth-connected device (see Fig. 15). The device stayed connected to the car's entertainment system, but the call was not streamed via the audio system. Also, *telecom* service reported another change of state from *BluetoothRoute* to *EarpieceRoute* at 13:22:41:211 From this moment, the rest of the call was conducted via the phone's earpiece. Once the phone call was finished, the display switched on (13:23:15.649) and the UI was locked.

Time	CLASS	DESCRIPTION	MESSAGE
13:22:41.207	BT logs	BT AUDIO disconnected	--HFSM-enter Connected (1/1)
13:22:41.211	phone log	audio route	AUDIO_ROUTE (Leaving state ActiveBluetoothRoute):BRM.oR->BRM
13:22:41.211	phone log	audio route	AUDIO_ROUTE (Entering state ActiveEarpieceRoute):BRM.oR->BRM
13:23:11.811	AutoWifiControll	screen OFF	processed=DefaultState org=InitialState dest=<null> what=12
13:23:15.576	phone log	call ended	DESTROYED:CSW.rC@DjA
13:23:15.649	AutoWifiControll	screen ON	processed=DefaultState org=InitialState dest=<null> what=12
13:23:19.270	BinderProxy	UI locked	pkg=com.android.systemui userId=0 what=HOME RECENT token=an
13:23:23.149	AutoWifiControll	screen OFF	processed=DefaultState org=InitialState dest=<null> what=12

Fig. 15. A phone call conducted via BT handsfree device

Similar results can also be retrieved from the SSRM service. The analyst can determine Bluetooth connectivity to car's audio system and the call, which is accompanied by screen activities. Analysts may also detect that the phone was set to *Power saving mode*, charged through the USB and connected to Volvo Car's entertainment system (see Fig. 16).

Time	CLASS	DESCRIPTION	MESSAGE
13:22:38.000	SSRM	app launched	[PKG] com.samsung.android.incallui
13:22:39.000	SSRM	screen ON	[SET] [PUX00RXXX00X0X / BT:My Volvo Car] [LCD] ON
13:22:41.000	SSRM	-	[SET] [PUX00R0XX00X0X / BT:My Volvo Car] >>> [Call]
13:23:11.000	SSRM	screen OFF	[SET] [PUX0XR0XX00X0X / BT:My Volvo Car] [LCD] OFF
13:23:15.000	SSRM	-	[SET] [PUX0XRXXX00X0X / BT:My Volvo Car] >>> [Call]
13:23:15.000	SSRM	screen ON	[SET] [PUX00RXXX00X0X / BT:My Volvo Car] [LCD] ON
13:23:19.000	SSRM	app launched	[PKG] com.waze
13:23:23.000	SSRM	screen OFF	[SET] [PUX0XRXXX00X0X / BT:My Volvo Car] [LCD] OFF

Fig. 16. A phone call conducted via BT handsfree device

In addition to the driver's behavioural activities, the investigator can determine other circumstances which might be relevant. For instance, analysts may detect the time when the mobile phone was connected or disconnected from the wireless network (*wifi*, *SSRM*), the time when the driver entered the car and started engine (*SSRM*, *Bluetooth_manager*) or even the approximate driving path (*wifi*). They may also detect whether the mobile device was charged (*UsageStats*, *SSRM*) or whether the system was rebooted (*Bluetooth_manager*, *SSRM*). *Recent Tasks* may also hold information about user activity (*Intent*). If the observed task is still in the stack, the investigator may obtain its content. Since in the current case the applications had not been closed but rather pushed to the background of UI, the content of the tasks could be restored (see Fig. 17).

Time	MESSAGE
13:48:47.038	* Recent #5: TaskRecord{daac8a3d0 #432 A=com.samsung.android.incallui U=0 StackId=-1 sz=0} mFullscreen=true mLastNonFullscreenBounds=null mLastDeXBounds=null intent={act=android.intent.action.MAIN flg=0x10840000 cmp=com.samsung.android.incallui/com.android.incallui.InCallActivity} hasBeenVisible=true mResizeMode=RESIZE_MODE_RESIZEABLE_VIA_SDK_VERSION mSupportsPictureInPicture=false isResizable=true firstActiveTime=1556362127038 lastActiveTime=1556362127038 lastActiveElapsedTime=393605219 (inactive for 1091s)
14:04:11.385	* Recent #4: TaskRecord{e1e2ff0d0 #424 A=com.google.android.apps.maps U=0 StackId=1 sz=1} mFullscreen=true mLastNonFullscreenBounds=null mLastDeXBounds=null intent={act=android.intent.action.VIEW cat=[android.intent.category.BROWSABLE] dat=https://maps.google.com/maps?q=stroomi+beach+address&client=ms-android-samsung-gs-rev1&um=1&ie=UTF-8&sa=X&ved=2ahUKEwj5n5vRiPDhAhVvsosKHa_XAsIQ_AUoAXoECAsQAAQ flg=0x14000000 cmp=com.google.android.apps.maps/com.google

Fig. 17. Restored Recent Task Intent

6 Conclusion

The goal of the study was to analyse the scope of the prospective digital evidence which resides in diagnostic data acquired from the *adb dumpsys* tool. As was demonstrated, *dumpsys* analysis does not require anything other than standard user-level access with the developer's options enabled, and it allows the investigator access to system-level data. The results from the analysis and synthetic case study proved the applicability of this technique in a real-life car accident investigation. The analysts have several options to determine user interaction with a mobile device, including their logins, texting, calling, interaction with social media or browsing offline content. Analysts can also identify telephony activities and distinguish their operating modes, such as conducting the phone call via the phone's earpiece or external handsfree appliance. *Dumpsys* diagnostic data allows the recovery of deleted phone call entries or attempts to delete other artefacts, which could lead to conviction. Since evidence acquisition does not rely on specialised digital forensics equipment, it may be conducted outside digital forensics laboratories.

Like any other operating system, the range and structure of the events described may be invalidated by newly implemented upgrades. The logic of the described services is such that the structure of the events can be re-designed, re-placed or may be completely removed. Despite these facts, the core services, such as, *activity*, *Bluetooth_manager*, *usagstats* and *wifi* have been identified across a selection of different mobile device brands, types and operating system versions, from AOS 5 to AOS 10. Even if a portion of the events may still become unavailable, the results and the method described in this work can serve as a valid starting point to conduct further research and customized development on a wider selection of brands and operating systems.

The outcome of the study can assist digital forensic practitioners to reveal additional evidence while investigating any type of crime or supporting the intelligence operations. Discovered artefacts may clarify the scope of used applications, services, paired accounts, paired devices, connected networks, visited locations, etc. It enables differentiation between whether a certain activity was initiated by a system or a user. The demonstrated method can assist investigators to verify a suspect's alibi, build communication networks or even verify whether a device's security has been breached. It can

also provide a vital framework for targeted preparation, automated evidence collection and further evidence visualisation.

7 Future Work

One of the biggest challenges identified in the study is to determine login activities. A significantly more believable artefact of the user's login activity can be extracted from the Android buffer log through *logcat*. However, the main drawback of a buffer log is its volatility, and future research should be focused either on less volatile evidence or methods to extend the artefact's lifetime.

As the scope of the analysed artefacts retrieved from Android *dumpsys* has not as yet been exhausted, further analyses should be extended to a number of additional topics. Activity manager has been found to be one of the most verbose plugins, responsible for almost 25% of *dumpsys* output. However, this analysis covered only 1 of 14 sections holding the information about user- and system-initiated activities. Correlation between *Recent Tasks*, *Broadcast Activities* and *Pending Items* activities might extend understanding of past user behaviour. The same applies to other services, mainly *wifi* and *bluetooth_manager*, which have not been explored in depth. Knowing how *msg.what* messages are constructed, additional research may deliver further evidence providers, which reflect human activities.

Since the structure of particular events from core services, such as *activity*, *bluetooth_manager*, *usagestats* and *wifi* has been changed with new AOS, demonstrated artefacts will require systematic verification. A significant challenge will be to keep track of newly implemented services. While the tested device (Samsung S9, AOS 8) offered 225 services, the same device upgraded to AOS 10 provides access to 303 services. Finally, automating post-acquisition analysis to build a structured timeline, be it JSON, CSV or other formats, would allow both effective examination and the correlation of results with external evidence providers across multiple cases.

8 Acknowledgments

I would like to thank Matthew Sorells for fruitful discussions and highly valuable feedback.

References

1. Lynne, C., Graeme, G.: Investigating evidence of mobile phone usage by drivers in road traffic accidents. *Digital Investigation* 12, S30-S37 (2015).
2. Tamma, R., Skulkin, O., Mahalik, H., Bommisetty, S.: *Practical Mobile Forensics: A hands-on guide to mastering mobile forensics for the iOS, Android, and the Windows Phone platform*. 3rd edn. Pack Publishing Ltd., Birmingham (2018).
3. Mantouka, E.G., Barmounakis E.N., Vlahogianni E.I.: Identifying driving safety profiles from smartphone data using unsupervised learning. *Safety Science* 119, 84-90 (2019).
4. Papadimitriou, E., Argyropoulou, A., Tselentis D.I., Yannis G.: Analysis of driver behaviour through smartphone data: The case of mobile phone use while driving. *Safety Science* 119, 91-97 (2019).
5. Mansor, H., Markantonakis, K., Akram, R.N., Mayes, K., Gurulian, I.: Log your car: The non-invasive vehicle forensics. In: 2016 IEEE Trustcom/BigDataSE/ISPA, pp. 974-982. IEEE, Tianjin (2016).
6. Khandakar, A., Chowdhury, M.E., Ahmed, R., Dhib, A., Mohammed, M., Al-Emadi, N.A.M.A., Michelson, D.: Portable System for Monitoring and Controlling Driver Behavior and the Use of a Mobile Phone While Driving. *Sensors* 19(7), 1563 (2019).
7. Khan, I., Khusro, S., Alam, I.: Smartphone Distractions and its Effect on Driving Performance using Vehicular Lifelog Dataset. In: 2019 International Conference on Electrical, Communication, and Computer Engineering (ICECCE), pp. 1-6. IEEE, Swat (2019).
8. Park, H., Ahn, D., Park, T., Shin, K.G.: Automatic Identification of Driver's Smartphone Exploiting Common Vehicle-Riding Actions. *IEEE Transactions on Mobile Computing* 17(2), 265-278 (2018).
9. Torres, R., Ohashi O., Pessin, G.: A Machine-Learning Approach to Distinguish Passengers and Drivers Reading While Driving. *Sensors* 19(14), 3174 (2019).
10. Yang, J., Sidhom, S., Chandrasekaran, G., Vu, T., Liu, H., Cekan, N., Chen, Y., Gruteser, M., Martin, R.P.: Detecting Driver Phone Use Leveraging Car Speakers. *IEEE Transactions on Mobile Computing* 11(9), 1426-1440 (2012).
11. Cano, T.A., Junker, D.H., Mårtensson, M., Skov, M.B., Raptis, D.: Using Smartwatch Inertial Sensors to Recognize and Distinguish Between Car Drivers and Passengers. In: 10th International Conference on Automotive User Interfaces and Interactive Vehicular Applications (AutomotiveUI '18), pp. 74-84. (2018).
12. Liu, L., Karatas, C., Li, H., Tan, S., Gruteser, M., Yang, J., Chen, Y., Martin, R.P.: Toward Detection of Unsafe Driving with Wearables. In: Proceedings of the 2015 Workshop on Wearable Systems and Applications (WearSys '15), pp. 27-32. (2015).
13. Mannini, A., Sabatini A.M.: Machine Learning Methods for Classifying Human Physical Activity from On-Body Accelerometers. *Sensors* 10(2), 1154-1175 (2010).
14. Lu, D.-N., Nguyen, D.-N., Nguyen, T.-H., Nguyen, H.-N.: Vehicle Mode and Driving Activity Detection Based on Analyzing Sensor Data of Smartphones. *Sensors* 18(4), 1036 (2018).
15. Oviedo-Trespalcios, O., King, M., Vaezipour, A., Truelove, V.: Can our phones keep us safe? A content analysis of smartphone applications to prevent mobile phone distracted driving. *Transportation Research Part F: Traffic Psychology and Behaviour* 60, 657-668 (2019).
16. Ferrante, A., Medvet, E., Mercaldo, F., Milosevic, J., Visaggio, C.A.: Spotting the Malicious Moment: Characterizing Malware Behavior Using Dynamic Features. In: 11th International Conference on Availability, Reliability and Security (ARES), pp. 372-381. IEEE, Salzburg (2016).

17. Lashkari, A.H., Kadir, A.F.A., Taheri, L., Ghorbani, A.A.: Toward Developing a Systematic Approach to Generate Benchmark Android Malware Datasets and Classification. In: 2018 International Carnahan Conference on Security Technology (ICCST), pp. 1-7. IEEE, Montreal (2018).
18. Trivedi N., Das M.L.: MalDetec: A Non-root Approach for Dynamic Malware Detection in Android. In: Shyamasundar R., Singh V., Vaidya J. (eds) Information Systems Security, ICISS 2017. LNCS, vol. 10717, pp. 231-240. Springer, Cham (2017).
19. Taheri, L., Kadir, A.F.A., Lashkari, A.H.: Extensible android malware detection and family classification using network-flows and API-calls. In: 2019 International Carnahan Conference on Security Technology (ICCST), pp. 1-8. IEEE, Chennai (2019).
20. Shoaib, M., Incel, O.D., Scolten, H., Havinga, P.: Resource consumption analysis of online activity recognition on mobile phones and smartwatches. In: 2017 IEEE 36th International Performance Computing and Communications Conference (IPCCC), pp. 1-6. IEEE, San Diego (2017).
21. Gómez, M., Rouvoy, R., Adams, B., Seinturier, L.: Mining Test Repositories for Automatic Detection of UI Performance Regressions in Android Apps. In: 2016 IEEE/ACM 13th Working Conference on Mining Software Repositories (MSR), pp. 13-24. IEEE, Austin (2016).
22. Basara, O.E., Alptekina, G., Volakaa, H.C., Isbilenb, M., Incela, O.D.: Resource Usage Analysis of a Mobile Banking Application using Sensor-and-Touchscreen-Based Continuous Authentication. *Procedia Computer Science* 155, 185-192 (2019).
23. Dumpsys, <https://developer.android.com/studio/command-line/dumpsys>, last accessed 2019/01/25.
24. Logcat command-line tool, <https://developer.android.com/studio/command-line/logcat#alternativeBuffers>, last accessed 2018/12/30.
25. Google Git Google repositories on Android, <https://android.googlesource.com/>, last accessed 2019/01/24.
26. RecentTasksInfo, <https://developer.android.com/reference/kotlin/android/app/ActivityManager.RecentTaskInfo.html>, last accessed 2020/04/15.
27. Understand Tasks and Back Stack, <https://developer.android.com/guide/components/activities/tasks-and-back-stack>, last accessed 2020/04/15.
28. Intent, <https://developer.android.com/reference/android/content/Intent.html>, last accessed 2020/04/10.
29. Intents and Intent Filter, <https://developer.android.com/guide/components/intents-filters>, last accessed 2020/04/10.
30. UsageStats, <https://developer.android.com/reference/android/app/usage/UsageStats>, last accessed 2020/03/17.
31. UsageEvents.Event, <https://developer.android.com/reference/android/app/usage/UsageEvents.Event.html>, last accessed 2020/03/17.
32. WiFiManager, <https://developer.android.com/reference/android/net/wifi/WifiManager>, last accessed 2020/03/02.
33. Google Git, Protocol.java, <https://android.googlesource.com/platform/frameworks/base.git/+master/core/java/com/android/internal/util/Protocol.java>, last accessed 2020/03/01.
34. Google Git, WifiController.java, <https://android.googlesource.com/platform/frameworks/base/+02ba86f/services/java/com/android/server/wifi/WifiController.java>, last accessed 2020/03/07.
35. Binder, <https://developer.android.com/reference/android/os/Binder.html>, last accessed 2020/01/25.

36. IBinder, <https://developer.android.com/reference/android/os/IBinder.html>, last accessed 2020/01/25.
37. Android_Binder, https://elinux.org/Android_Binder, last accessed 2019/05/04.
38. Google Git, BinderProxy.java, <https://android.googlesource.com/platform/frameworks/base/+master/core/java/android/os/BinderProxy.java>, last accessed 2019/07/25.
39. Google Git, CallAudioRouteStateMachine.java, https://android.googlesource.com/platform/packages/services/Telecomm/+android-7.0.0_r7/src/com/android/server/telecom/CallAudioRouteStateMachine.java, last accessed 2019/04/29.
40. Android source, Bluetooth and NFC, https://source.android.com/devices/bluetooth/verifying_debugging, last accessed 2019/05/02.
41. Configure on-device developer options, <https://developer.android.com/studio/debug/dev-options>, last accessed 2019/01/23.
42. Code Review, WifiController.java, https://review.arrowos.net/c/ArrowOS/android_frameworks_opt_net_wifi/+3458/1/service/java/com/android/server/wifi/WifiController.java, last accessed 2019/05/22.